



APPENDIX AVAILABLE ON THE HEI WEB SITE

Research Report 179

Development and Application of an Aerosol Screening Model for Size-Resolved Urban Aerosols

Charles O. Stanier and Sang-Rin Lee

Appendix H. Wind Data from LB4 Site

Note: Appendices available only on the Web have been reviewed solely for spelling, grammar, and cross-references to the main text. They have not been formatted or fully edited by HEI.

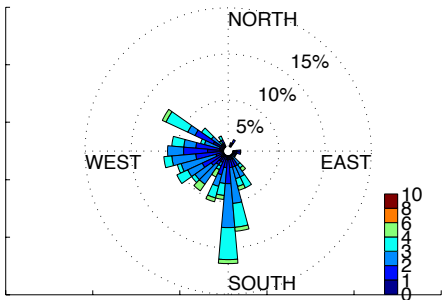
Correspondence may be addressed to Dr. Charles O. Stanier, University of Iowa, 4122 Seamans Center for the Engineering Arts and Sciences, Iowa City, IA 52242-1527; email: charles-stanier@uiowa.edu.

Although this document was produced with partial funding by the United States Environmental Protection Agency under Assistance Award CR-83467701 to the Health Effects Institute, it has not been subjected to the Agency's peer and administrative review and therefore may not necessarily reflect the views of the Agency, and no official endorsement by it should be inferred. The contents of this document also have not been reviewed by private party institutions, including those that support the Health Effects Institute; therefore, it may not reflect the views or policies of these parties, and no endorsement by them should be inferred.

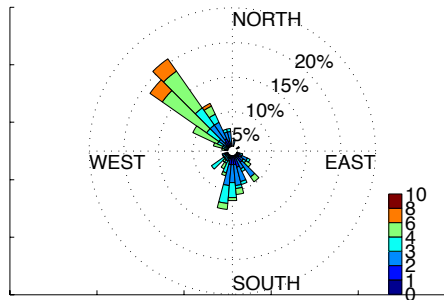
This document was reviewed by the HEI Health Review Committee.

© 2014 Health Effects Institute, 101 Federal Street, Suite 500, Boston, MA 02110-1817

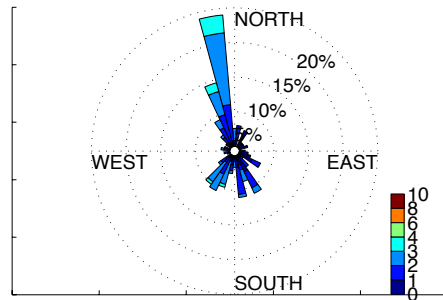
WRF Data Wind Rose Longbeach Sept 2007, n=231



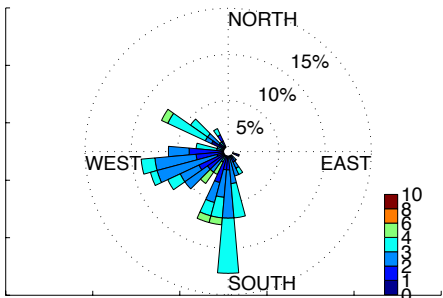
NWS Data Wind Rose Longbeach Sept 2007, n=231



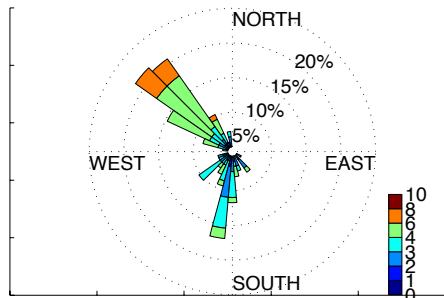
USC Data Wind Rose Longbeach Sept 2007, n=231



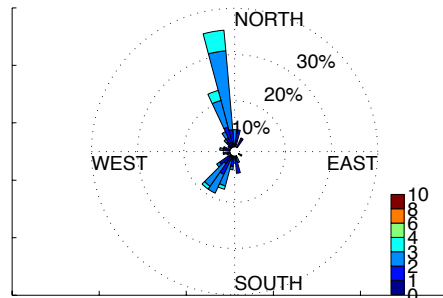
WRF Daytime Data Wind Rose Longbeach Sept 2007, n=134



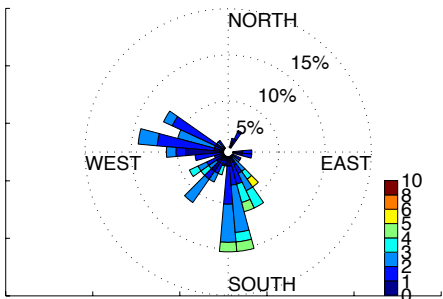
NWS Daytime Data Wind Rose Longbeach Sept 2007, n=134



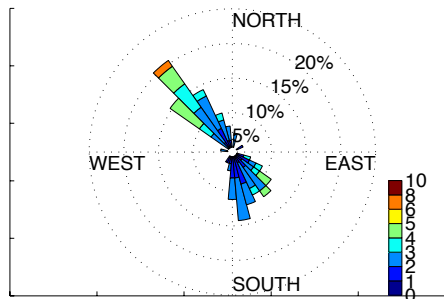
USC Daytime Data Wind Rose Longbeach Sept 2007, n=134



WRF Night Data Wind Rose Longbeach Sept 2007, n=97



NWS Night Data Wind Rose Longbeach Sept 2007, n=97



USC Night Data Wind Rose Longbeach Sept 2007, n=97

